

Parkheath

Sold on Service

Burrard Road NW6

£4,700 PCM (£1,085 per week) - Camden Band F



Charming 4 double bedroom family home in West Hampstead

25'6 reception/dining room with wood flooring

2 bathrooms (1 en suite shower room)

Double glazed windows

Transport links via West Hampstead's Thameslink, Overground and Underground stations

Arranged over 3 floors

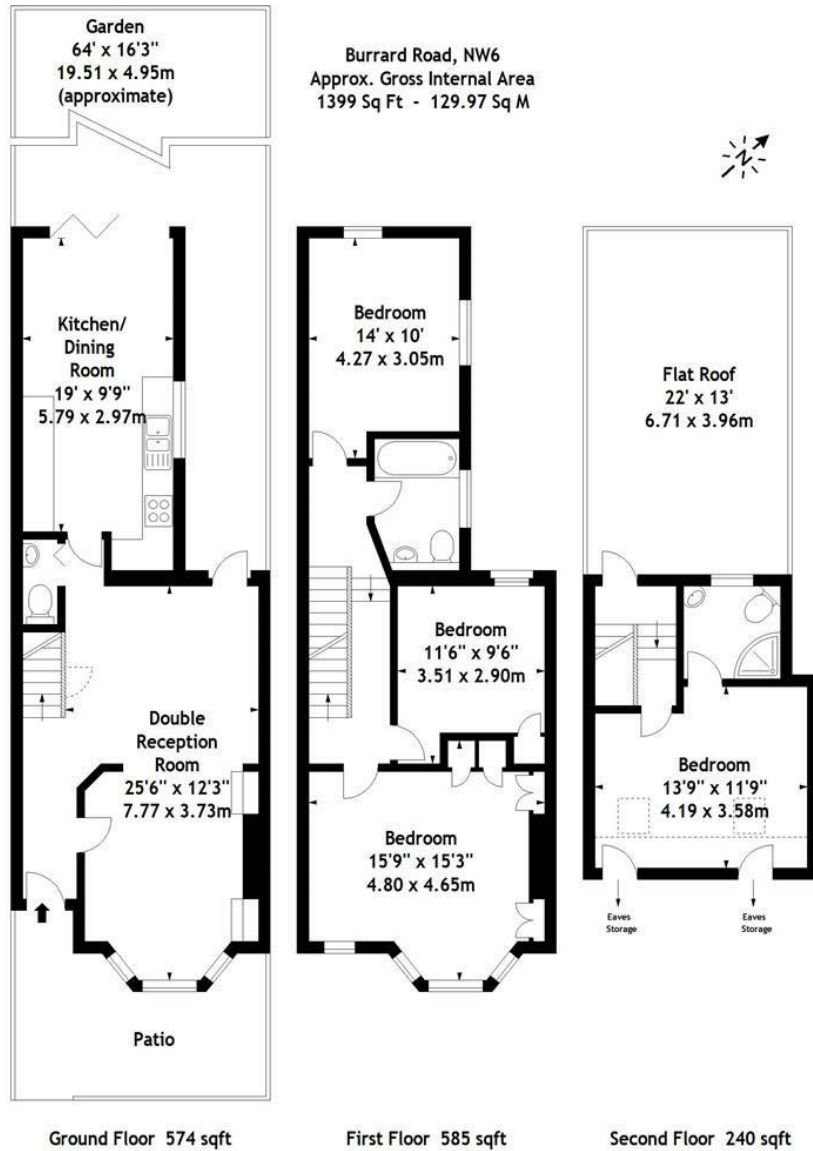
Contemporary kitchen/diner opening onto a 60' garden

Downstairs guest WC

Ideally situated moments from Fortune Green amenities

EPC: Rating D, Council Tax: Camden band F

West Hampstead Office 020 7794 7111



Measured in accordance with RICS guidelines. Every attempt is made to ensure accuracy, however all measurements are approximate. This floor plan is for illustrative purposes only and is not to scale.
© Datagraphy Ltd 2014
Photographs * Floorplans * Virtual Tours
Tel: 0845 643 4401 www.datagraphy.com

The particulars do not constitute part of an offer or contract. The particulars, including text, photographs and plans, are for the guidance only of prospective purchasers/tenants and must not be relied upon as statements of fact. The descriptions provided therein represent the opinion of the author and whilst given in good faith should not be construed as statements of fact. Nothing in these particulars shall be deemed a statement that the property is in good condition or otherwise or that any services or facilities are in good working order. All measurements are approximate